



# Presentations

# Romeo Community Schools

---

**Pupil Enrollment Projection Study Presentation**

**May 1, 2023**



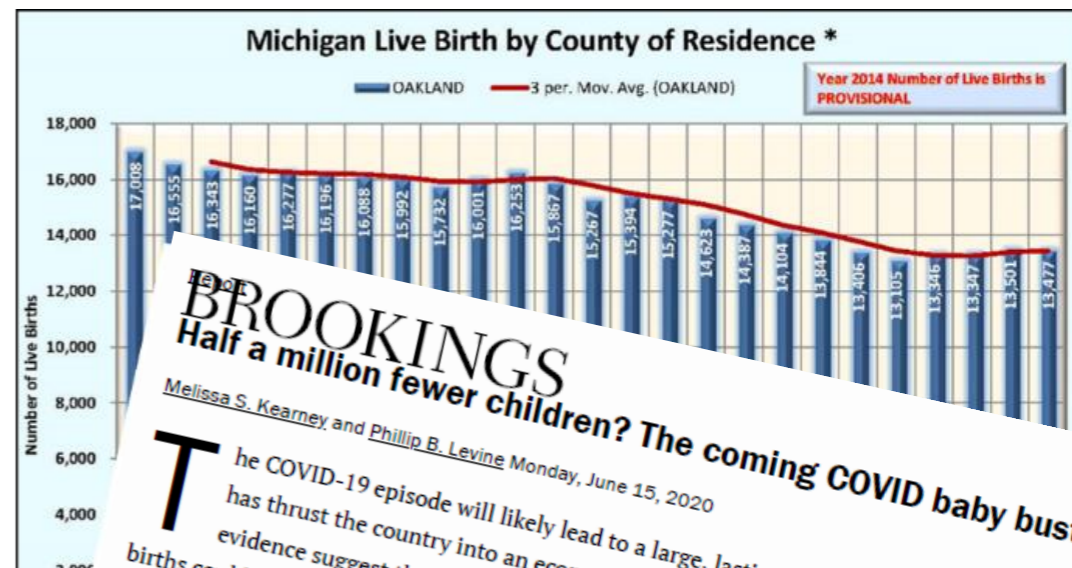
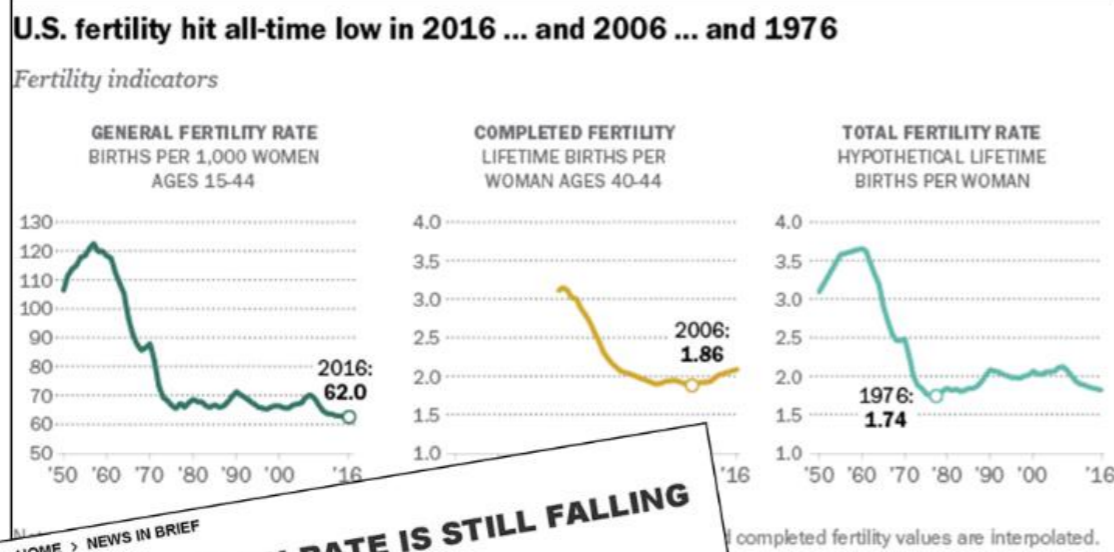
# Agenda

---

- **District Demographics and Trends**
- **Pupil Enrollment Methodology**
- **District Wide Pupil Enrollment Projection**
- **Key Takeaways**
- **Questions/Answers**



# Demographics & Trends



**HOME > NEWS IN BRIEF**

## THE U.S. BIRTH RATE IS STILL FALLING

But that's not necessarily a bad thing.

KATE WHEELING - JAN 11, 2019

The fertility rate in the United States has been falling for would be declining without immigration, according to a Prevention. This marks the seventh straight year that the

In 2017, the nationwide fertility rate was 1,765.5 births rate of 2,100 births per 1,000 women necessary to keep differences. South Dakota, for example, had the highest women, while Washington, D.C., had the lowest with birth rates above replacement levels.

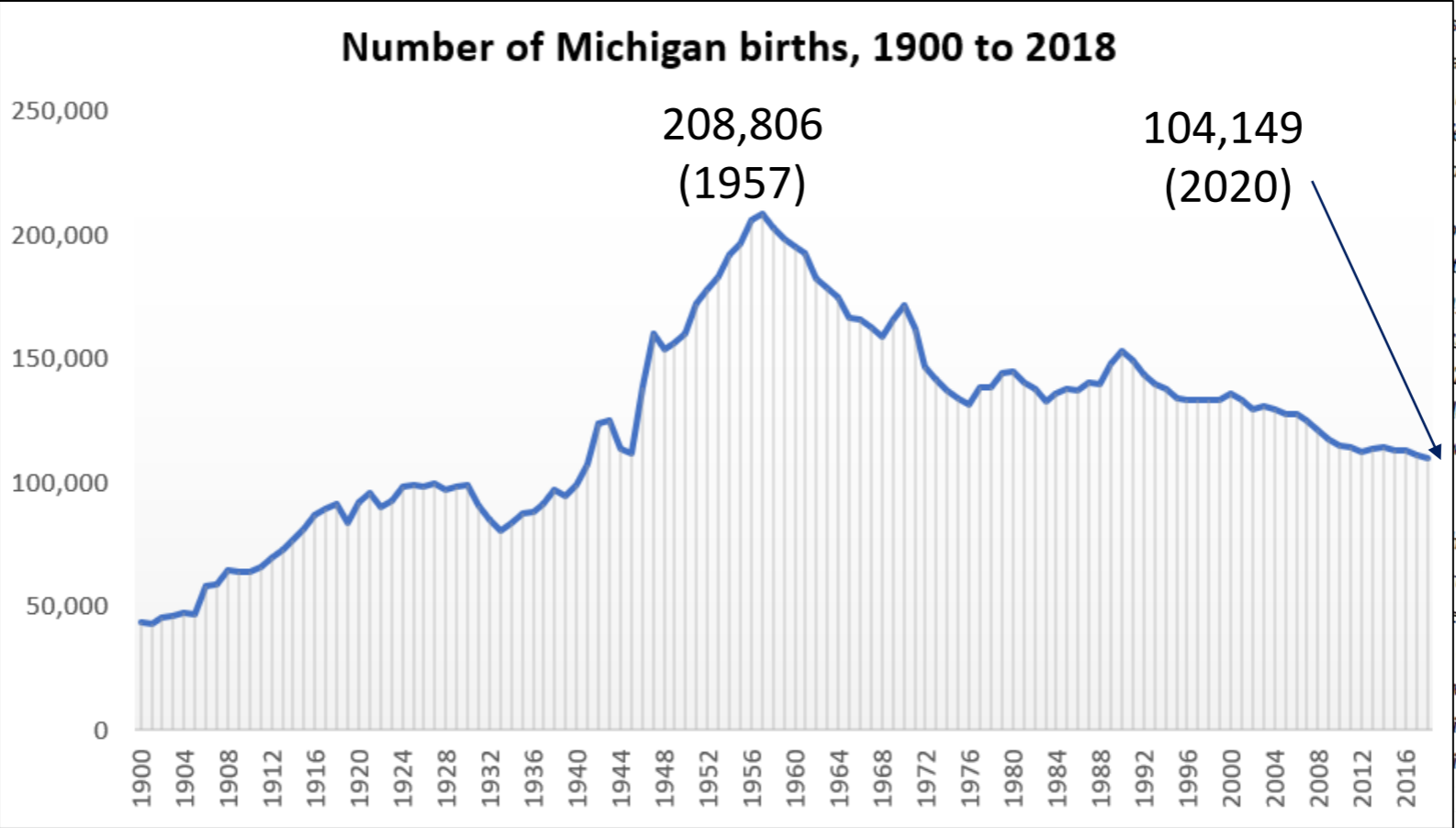
Though the report doesn't speculate about why fertility that cultural shifts, economic anxiety, and a slew of

"It seems like the immediate causal factor is probably South Carolina. Fertility started to fall right around again."

"It seems like the immediate causal factor is probably the University of South Carolina. Fertility started come back up again."

Childbearing decisions are often tied to our fertility the economic indicators have improved, people

Stagnant wages after the last recession coupled Millennials with too much financial anxiety the U.S.: Two-thirds of first-time mothers in only two countries without a national paid Institute. A little over half of U.S. comparable leave. And childcare can be a crippling expense income.



**BROOKINGS**

## Half a million fewer children? The coming COVID baby bust

Melissa S. Kearney and Phillip B. Levine Monday, June 15, 2020

The COVID-19 episode will likely lead to a large, lasting baby bust. The pandemic has thrust the country into an economic recession, and evidence suggests that births could decline significantly.

Economic reasoning and past behavior suggest that fertility next year. We base this on fertility behavior, along with data from the 1918 Spanish Flu.

They playfully speculated that there would be a "tuck home" with their children in the months about birth spikes during the 1918 Spanish Flu. As it turns out, those spikes were followed by a sharp decline in fertility (Q1, 2020). But the COVID-19 crisis is leading to a similar decline in fertility. It is leading to a similar decline in fertility. It is leading to a similar decline in fertility.

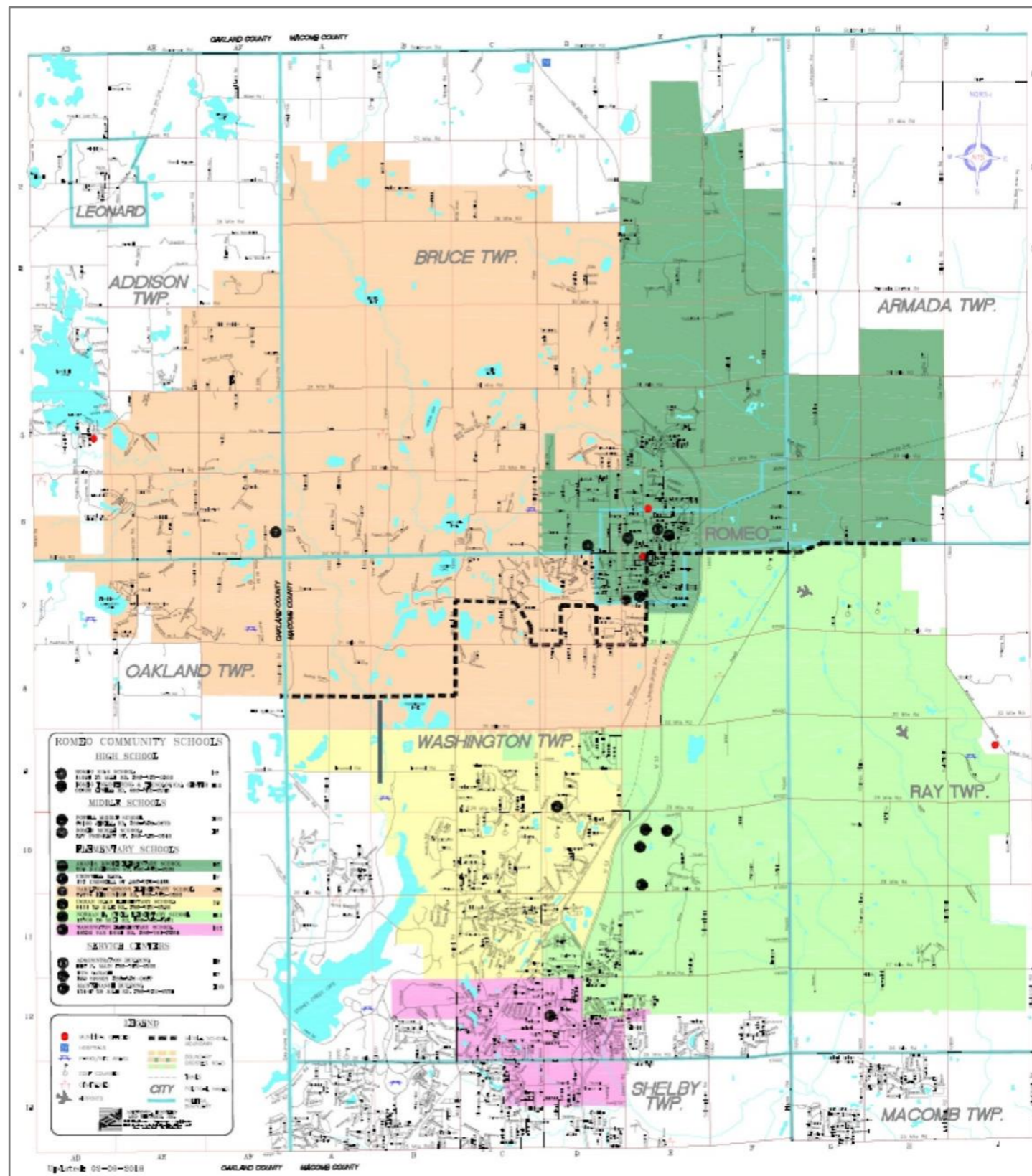
Why birth rates will decline in the coming years. The pandemic has thrust the country into an economic recession, and evidence suggests that births could decline significantly. Economic reasoning and past behavior suggest that fertility next year. We base this on fertility behavior, along with data from the 1918 Spanish Flu. They playfully speculated that there would be a "tuck home" with their children in the months about birth spikes during the 1918 Spanish Flu. As it turns out, those spikes were followed by a sharp decline in fertility (Q1, 2020). But the COVID-19 crisis is leading to a similar decline in fertility. It is leading to a similar decline in fertility.



# Demographics & Trends

## □ PMC's Process

- Demographic Growth
  - GIS
  - US Census Bureau
- Core Base Statistical Area
  - Primary Area (District)
  - Comparison #1 (County)
  - Comparison #2 (State)
- Cohort Survival – DS 4061



# Demographics & Trends

## School District Data Book

=== General Characteristics Profile (Summary) ===

Primary Area: Romeo Community Schools  
 Comparison Area 1: County of: Macomb  
 Comparison Area 2: State of: Michigan

### □ School District's Demographics

Median Age of Householder	55.5
Total Number of Families	9,388
Households with School Age Children	5,302
% of Household with School Age Children	42.7%
Enrolled School Age Children PK-12	5,828
Enrolled in Public Pre-primary School	66.8%
Enrolled in Private Pre-primary School	33.2%
Enrolled in Public School (K-12)	85.2%
Enrolled in Private School (K-12)	14.8%

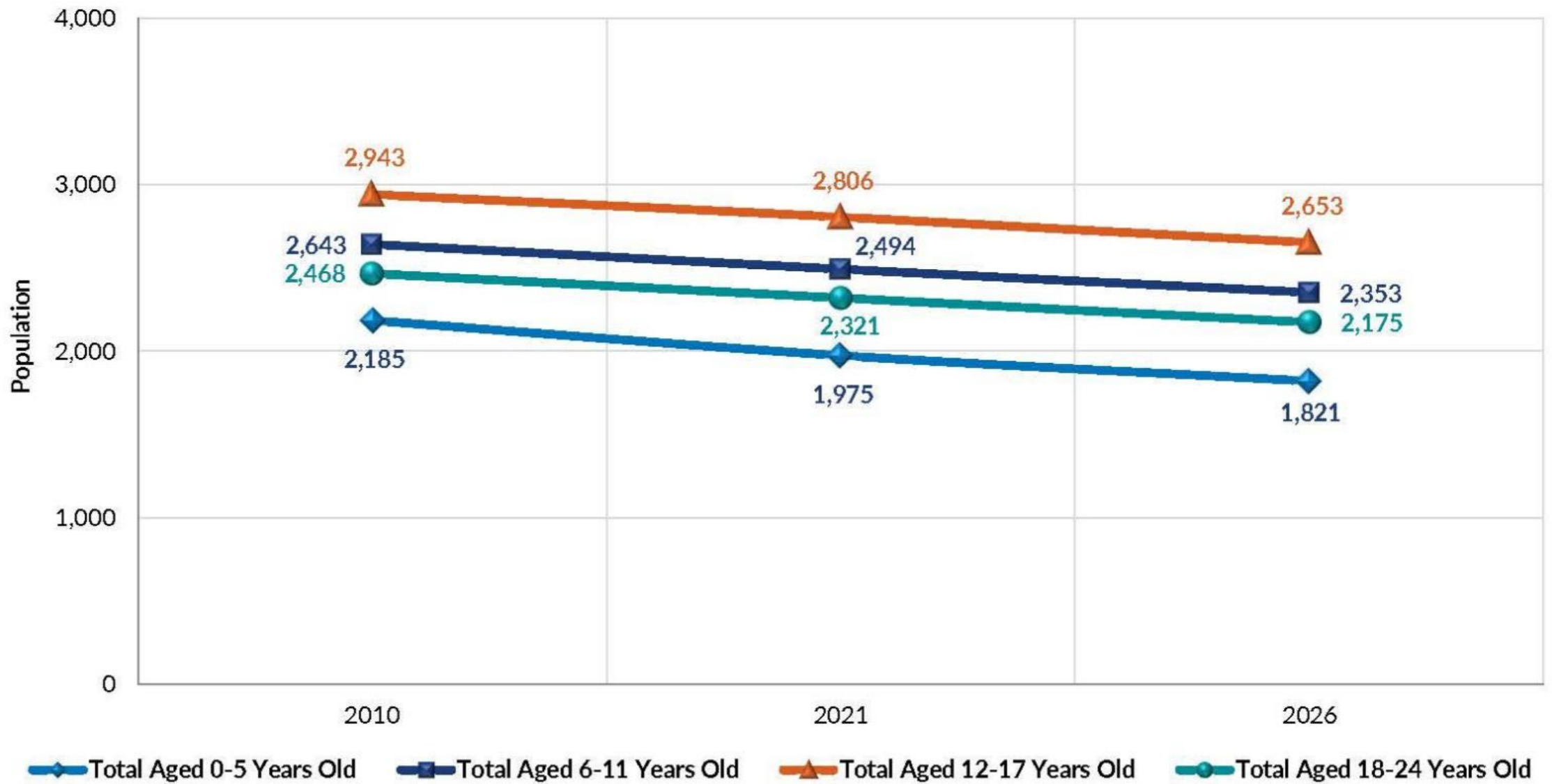
	Primary Area	Comparison Area 1	Comparison Area 2
	Romeo Community Schools	Macomb County	Michigan
County FIPS Code (Some Districts)		26099	
Grade Range (District)	KG - 12		
<b>Total Persons</b>	33,262	872,373	9,970,224
Urban Population	77.93%	97.18%	74.64%
White	86.60%	76.68%	71.74%
Black	2.40%	11.77%	14.09%
Asian	1.64%	5.03%	3.57%
Am. Indian/Alaskan	0.30%	0.40%	0.78%
Other	2.06%	0.97%	1.86%
2 or More Races	1.80%	2.47%	2.97%
Hispanic	5.20%	2.69%	4.98%
<b>Median Age</b>	44.0	41.2	40.8
<b>Total Housing Units</b>	13,103	366,491	4,580,364
<b>Total Housing Units - Occupied</b>	12,424	347,087	3,967,016
<b>Median Housing Value</b>	\$ 229,641	\$ 151,158	\$ 145,904
<b>Median Household Income</b>	\$ 92,925	\$ 75,148	\$ 68,223
<b>Average Household Income</b>	\$ 110,295	\$ 91,822	\$ 88,714
<b>Per Capita Personal Income</b>	\$ 41,525	\$ 36,828	\$ 35,796
<b>High Income Average</b>	\$ 273,748	\$ 297,581	\$ 328,447
<b>Total Number of Families</b>	9,388	228,333	2,523,124
<b>Total Number of Households</b>	12,424	347,087	3,967,016
<b>Average Household Size</b>	2.67	2.49	2.46
<b>Median Household Size</b>	2.80	2.60	2.60
<b>Median Age of Householder</b>	55.5	53.8	53.2
<b>Households with School Age Children</b>	5,302	153,574	1,534,523
% of Household with School Age Children	42.7%	44.2%	38.7%
Average # of K-12 children per household	1.10	0.94	1.16
Average # of K-12 children per housing unit	0.43	0.44	0.39
Median Year Moved In	2009	2003	2003
<b>Enrolled School Age Children PK-12</b>	5,828	144,311	1,779,526
Enrolled in Public Pre-primary School	66.83%	74.69%	67.24%
Enrolled in Private Pre-primary School	33.17%	25.31%	32.76%
Enrolled in Public School (K-12)	85.21%	88.94%	89.02%
Enrolled in Private School (K-12)	14.79%	11.06%	10.98%
<b>Household Educational Attainment (Pop 25+)</b>			
Less Than High School (no diploma)	6.96%	8.54%	9.47%
High School Graduate	25.99%	30.34%	29.35%
Some College	26.09%	26.66%	22.85%
Associate's Degree (2 years)	11.32%	9.60%	9.26%
Bachelor's Degree (4 years)	18.16%	15.85%	18.13%
Master's Degree	9.12%	7.31%	8.17%
Professional Degree	1.84%	1.30%	1.82%
Doctorate Degree	0.52%	0.38%	0.96%
<b>Employment Profile (Pop 16+)</b>			
White Collar Occupations	59.04%	55.17%	54.74%
Blue Collar Occupations	28.57%	26.77%	26.52%
Service Occupations	12.38%	18.07%	18.74%



# Demographics & Trends

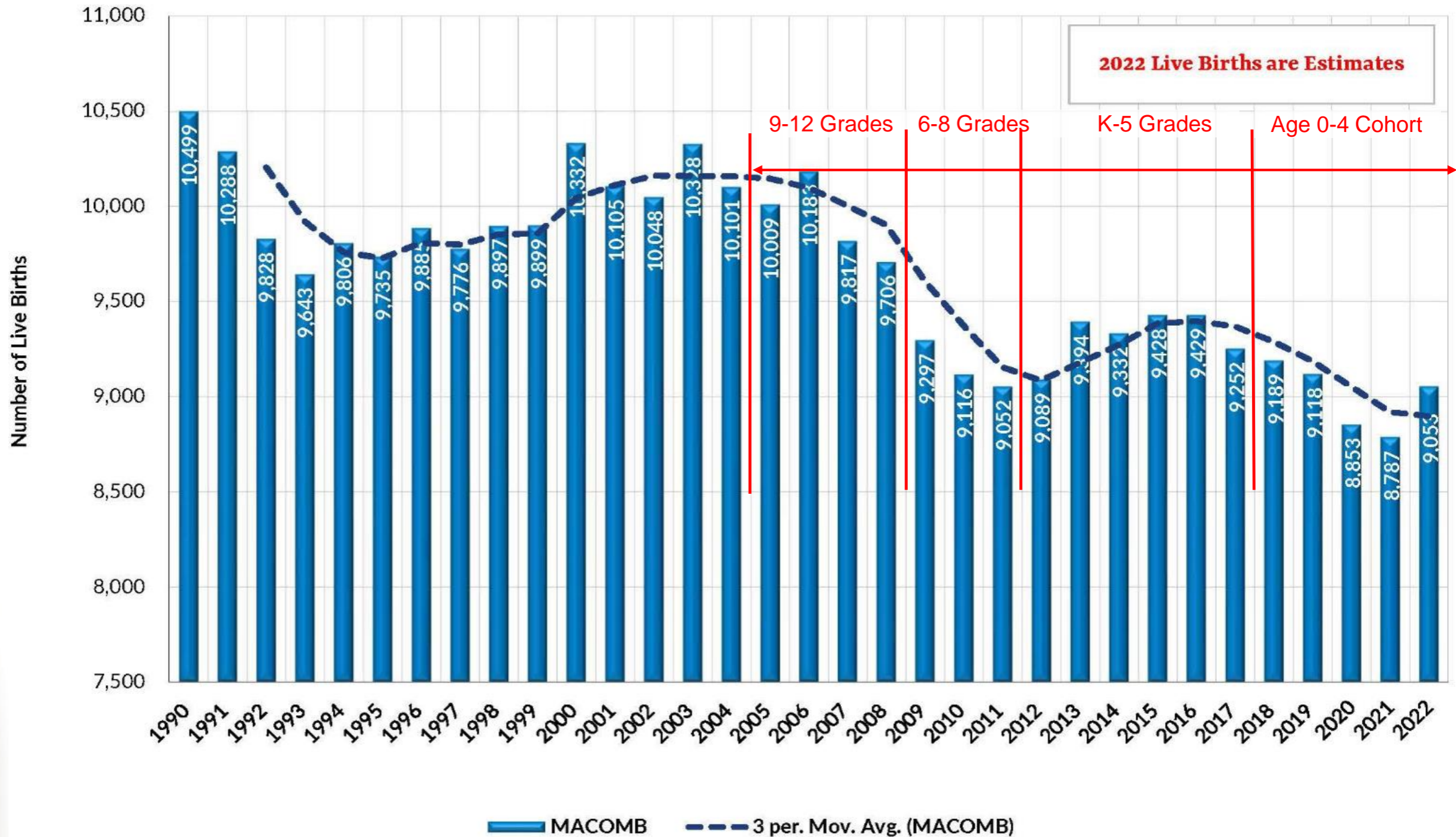
## Romeo Community Schools

### Population Trend by Age Groups



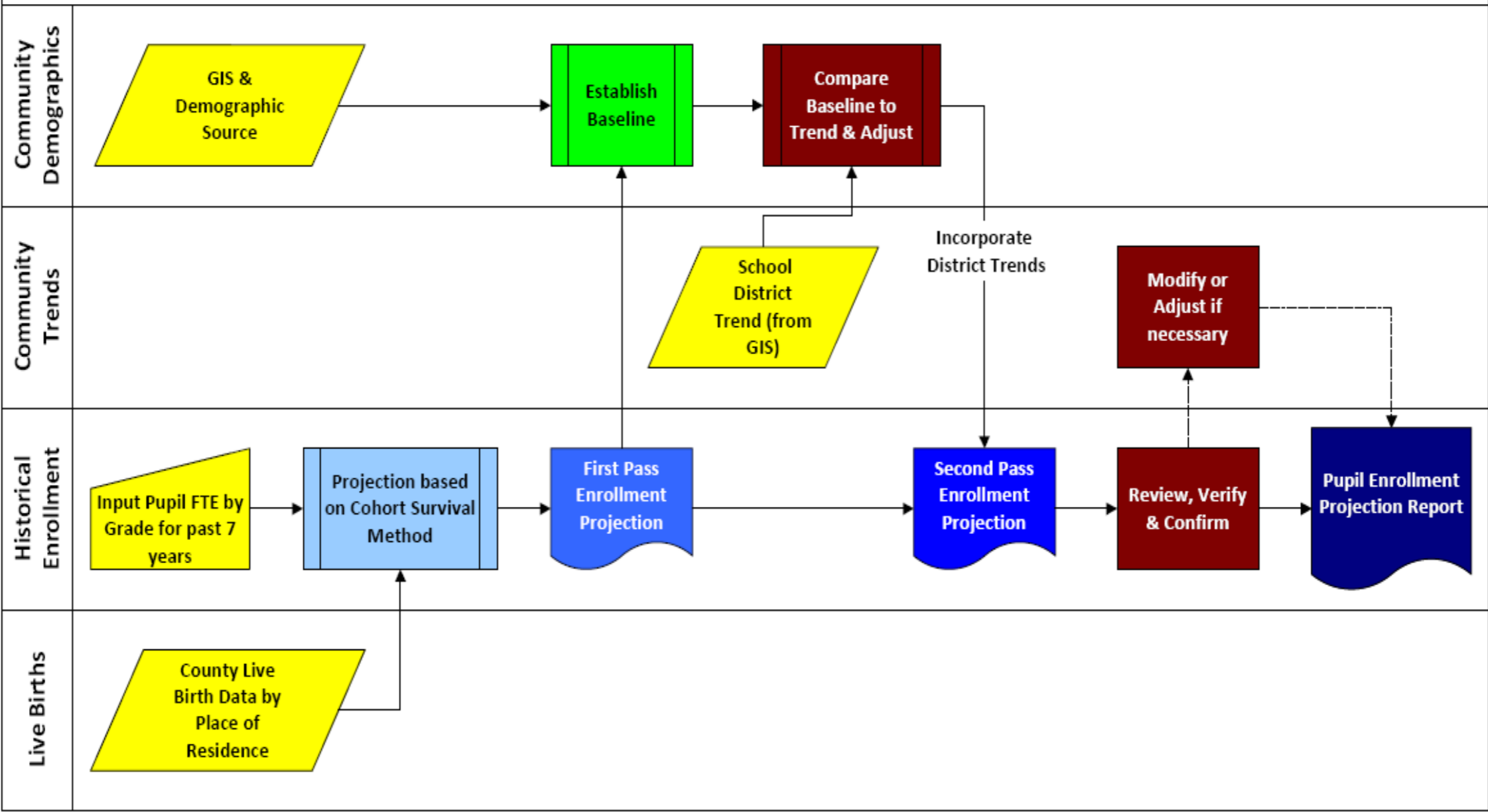
# Demographics & Trends

Michigan Live Births by County of Residence \*





# Methodology



# Historical Enrollment

Romeo Community Schools

MACOMB County, Michigan

K-12 Pupil Membership in General Education (Historical)

Please Indicate:

FTE

DISTRICT WIDE (ALL PUPILS)

(\*need Spring data for Blended Projections)

Grade	EXAMPLE			Academic Year 2015*			Academic Year 2016			Academic Year 2017			Academic Year 2018		
	Fall	Spring	Blended*	Fall 2015	Spring 2016	Blended*	Fall 2016	Spring 2017	Blended*	Fall 2017	Spring 2018	Blended*	Fall 2018	Spring 2019	Blended*
K	962.39	965.88	1,036.89	336.46	332.10	-	332.17	328.99	332.16	331.91	337.55	331.62	330.47	331.80	331.18
1	1,102.95	1,051.71	999.29	348.83	339.43	-	346.66	335.70	345.94	329.96	326.59	330.53	348.10	349.35	345.95
2	998.05	977.88	1,091.51	371.24	371.67	-	350.65	355.80	352.75	331.10	326.74	333.57	324.66	324.69	324.87
3	1,066.59	1,089.80	986.96	350.79	351.76	-	372.44	367.05	370.37	363.56	360.29	363.91	340.16	332.24	342.17
4	1,095.53	993.73	1,055.61	356.39	351.96	-	346.44	350.53	346.99	381.90	381.81	378.76	369.31	367.08	370.56
5	1,108.18	1,047.55	1,126.27	379.51	386.08	-	358.34	356.61	361.11	353.24	350.03	353.58	397.19	388.83	392.47
6	1,149.59	1,162.28	1,087.72	398.95	396.01	-	387.08	388.52	387.97	355.02	349.92	358.37	362.15	361.40	360.93
7	1,195.03	1,110.56	1,175.43	416.20	410.29	-	408.09	408.65	408.31	389.15	387.96	391.10	365.48	360.86	367.73
8	1,254.78	1,184.72	1,184.29	435.90	425.07	-	434.58	426.95	433.63	417.19	409.94	418.17	397.11	395.58	398.39
9	1,169.45	1,179.68	1,219.26	421.97	417.54	-	442.21	436.16	439.74	450.00	451.14	448.62	424.91	410.01	427.53
10	1,210.18	1,223.33	1,181.93	415.42	420.19	-	418.35	410.71	418.53	438.71	434.08	435.91	441.92	435.08	441.14
11	1,184.55	1,142.41	1,193.89	420.85	411.95	-	418.10	407.44	417.49	412.71	408.28	412.18	423.11	416.75	421.63
12	1,258.77	1,141.07	1,155.48	426.49	408.83	-	435.95	423.59	433.24	435.89	423.49	434.66	402.24	392.50	404.37
<b>K-12</b>	<b>14,756.04</b>	<b>14,270.60</b>	<b>14,494.53</b>	<b>5,079.00</b>	<b>5,022.88</b>	<b>-</b>	<b>5,051.06</b>	<b>4,996.70</b>	<b>5,048.24</b>	<b>4,990.34</b>	<b>4,947.82</b>	<b>4,990.98</b>	<b>4,926.81</b>	<b>4,866.17</b>	<b>4,928.91</b>
Y5	38.10	32.96	37.72	-	-	-	-	-	-	-	-	-	-	-	-
SE	88.24	117.12	123.85	94.45	89.40	-	101.00	95.13	99.84	108.59	98.94	107.24	84.46	82.21	85.91
RVA	393.77	421.08	399.83	-	-	-	-	-	-	-	-	-	-	-	-
Shared Time (H)	-	-	-	160.35	164.86	-	153.74	156.49	154.85	187.69	190.04	184.57	203.82	209.66	202.44
Shared Time (M)	-	-	-	-	-	-	8.61	10.65	-	6.70	6.58	7.10	-	-	-
<b>Total</b>	<b>15,276.15</b>	<b>14,841.76</b>	<b>15,055.93</b>	<b>5,333.80</b>	<b>5,277.14</b>	<b>-</b>	<b>5,314.41</b>	<b>5,258.97</b>	<b>5,302.93</b>	<b>5,293.32</b>	<b>5,243.38</b>	<b>5,289.89</b>	<b>5,215.09</b>	<b>5,158.04</b>	<b>5,217.26</b>

Grade	Academic Year 2019			Academic Year 2020			Academic Year 2021			Academic Year 2022			Academic Year 2023 Projected		
	Fall 2019	Spring 2020	Blended*	Fall 2020	Spring 2021	Blended*	Fall 2021	Spring 2022	Blended*	Fall 2022	Spring 2023	Blended*	Fall 2023 Projected	Spring 2024 Projected	Blended 2023 Projected
K	304.89	309.49	307.58	274.46	265.41	277.96	354.83	357.47	345.89	355.33	347.85	355.54	326.21	329.01	324.79
1	331.38	326.57	333.18	321.69	322.23	322.18	318.09	312.81	318.50	362.91	356.72	357.90	372.48	361.61	372.15
2	346.16	344.99	344.01	323.56	320.31	325.70	337.82	334.02	336.07	331.18	325.56	331.46	363.46	357.97	358.54
3	330.25	328.60	330.45	339.19	342.68	338.13	332.38	327.20	333.41	354.72	350.69	351.97	339.26	331.75	338.99
4	338.36	333.91	341.23	331.67	334.39	331.89	349.96	343.98	348.40	349.63	340.27	349.07	362.51	358.48	359.46
5	366.07	368.09	368.35	336.14	334.22	339.34	353.64	350.53	351.70	353.41	352.33	353.12	357.11	346.00	356.32
6	400.01	393.89	396.15	369.81	365.53	372.22	362.84	355.22	363.11	377.80	371.59	375.54	364.54	361.17	363.64
7	365.72	360.22	365.23	406.13	400.89	401.54	391.72	381.06	392.64	368.90	364.82	370.12	386.85	379.13	384.41
8	363.15	363.96	366.39	362.63	361.81	362.76	427.63	424.52	421.05	419.23	419.44	419.76	378.67	377.18	379.86
9	418.38	412.97	417.54	391.05	390.43	393.24	387.32	383.86	387.63	454.71	447.30	447.63	441.84	440.13	441.99
10	420.21	417.61	421.70	417.34	411.01	417.37	398.46	387.22	399.72	392.43	388.73	391.91	454.75	446.24	447.32
11	437.73	433.00	435.63	403.64	390.00	406.58	406.10	378.85	404.49	360.10	355.55	361.98	378.48	371.31	377.95
12	432.80	423.04	428.77	411.43	387.39	412.59	387.69	367.31	387.66	374.68	353.67	373.94	352.36	343.33	354.25
<b>K-12</b>	<b>4,855.11</b>	<b>4,816.34</b>	<b>4,856.22</b>	<b>4,688.74</b>	<b>4,626.30</b>	<b>4,701.50</b>	<b>4,808.48</b>	<b>4,704.05</b>	<b>4,790.26</b>	<b>4,855.03</b>	<b>4,774.52</b>	<b>4,839.93</b>	<b>4,878.51</b>	<b>4,803.31</b>	<b>4,859.69</b>
Y5	88.00	88.00	88.00	88.00	85.00	88.00	108.00	108.00	105.70	75.00	75.00	78.30	92.12	91.27	92.23
SE	66.10	69.55	67.71	71.25	74.72	71.08	73.44	100.20	73.57	78.35	73.29	80.54	75.81	84.53	76.36
RVA	-	-	-	42.28	40.93	-	84.92	132.15	80.52	145.19	194.14	143.89	145.89	195.31	144.47
Shared Time (H)	183.40	181.33	186.03	169.10	170.47	170.32	165.40	162.68	165.91	159.60	159.60	159.91	167.95	167.80	168.23
Shared Time (M)	-	-	-	-	-	-	-	-	-	-	-	-	-	-	-
<b>Total</b>	<b>5,192.61</b>	<b>5,155.22</b>	<b>5,109.95</b>	<b>5,059.37</b>	<b>4,997.42</b>	<b>5,030.90</b>	<b>5,240.24</b>	<b>5,207.08</b>	<b>5,215.96</b>	<b>5,313.17</b>	<b>5,276.55</b>	<b>5,302.56</b>	<b>5,360.28</b>	<b>5,342.21</b>	<b>5,340.98</b>

Note: \* Pupil Blended Count membership (number) is calculated based on 90% of Fall count & 10% of Spring count of a Calendar year.

# District-wide Pupil Enrollment

Start Here

## ENROLLMENT PROJECTION USING COHORT SURVIVAL METHOD & Adjusted to Community Demographic Trends

Educational Agency Name: **Romeo Community Schools**  
County: **MACOMB**

BASED ON 2022 FALL FTE  
DISTRICT WIDE (ALL PUPILS)

Historical Projected

Birth Yr	2011	2012	2013	2014	2015	2016	2017	2018	2019	2020	2021	2022
Births	9,052	9,089	9,394	9,332	9,428	9,429	9,252	9,189	9,118	8,853	8,787	9,053
K% Birth	3.67%	3.65%	3.52%	3.27%	2.91%	3.76%	3.84%	3.55%	3.52%	3.53%	3.59%	3.61%

2022 Live Births are ESTIMATES

Anticipated Non-historical Factor: 0.13%

projected K% Birth is average of previous six years, excluding Min/Max

Grade	Historical Data							Projection Data									
	2016	2017	2018	2019	2020	2021	2022	2023	2024	2025	2026	2027	2028	2029	2030	2031	2032
K	332	332	330	305	274	355	355	326	321	312	316	327	N.A.	N.A.	N.A.	N.A.	N.A.
1	347	330	348	331	322	318	363	372	342	337	327	331	342	N.A.	N.A.	N.A.	N.A.
2	351	331	325	346	324	338	331	363	373	342	337	328	331	343	N.A.	N.A.	N.A.
3	372	364	340	330	339	332	355	339	372	382	351	346	339	346	339	346	339
4	346	382	369	338	332	350	350	363	347	380	391	359	359	359	359	359	359
5	358	353	397	366	336	354	353	357	370	354	389	399	399	399	399	399	399
6	387	355	362	400	370	363	378	365	368	382	365	401	401	401	401	401	401
7	408	389	365	366	406	392	369	387	373	377	391	374	410	421	387	381	370
8	435	417	397	363	363	428	419	379	397	383	387	401	384	421	432	397	391
9	442	450	425	418	391	387	455	442	399	419	404	408	408	408	408	408	408
10	418	439	442	420	417	398	392	455	442	399	419	404	404	404	404	404	404
11	418	413	423	438	404	406	360	378	439	426	385	404	404	404	404	404	404
12	436	436	402	433	411	388	375	352	370	429	417	377	377	377	377	377	377
<b>K - 12</b>	<b>5,051</b>	<b>4,990</b>	<b>4,927</b>	<b>4,855</b>	<b>4,689</b>	<b>4,808</b>	<b>4,855</b>	<b>4,879</b>	<b>4,914</b>	<b>4,924</b>	<b>4,878</b>	<b>4,857</b>					
Year-to-Year #Growth:		-61	-64	-72	-166	120	47	23	36	9	-46	-21					
Year-to-Year %Growth:		-1.20%	-1.27%	-1.46%	-3.43%	2.55%	0.97%	0.48%	0.73%	0.19%	-0.92%	-0.44%					
Y5	-	-	-	88	88	108	75	92	93	93	92	92					
SE	101	109	84	66	71	73	78	76	76	77	76	75					
RVA	-	-	-	-	42	85	145	146	147	147	146	145					
Shared Time (H)	154	188	204	183	169	165	160	168	169	170	168	167					
Shared Time (M)	9	7	-	-	-	-	-	-	-	-	-	-					
<b>Totals</b>	<b>5,314</b>	<b>5,293</b>	<b>5,215</b>	<b>5,193</b>	<b>5,059</b>	<b>5,240</b>	<b>5,313</b>	<b>5,360</b>	<b>5,400</b>	<b>5,410</b>	<b>5,360</b>	<b>5,336</b>					

Birth Year: 2017  
Births: 9,252  
K% of Births: 3.84%

K-12 Enrollment: 4,855  
# Difference: 47  
% Growth: .97%

Total: 5,313

year averaging trend; RVA projections are based on current year data; all are directly related to K-12 totals and are not affected by community demographics.

# District-wide Pupil Enrollment

## ENROLLMENT PROJECTION USING COHORT SURVIVAL METHOD & Adjusted to Community Demographic Trends

Educational Agency Name: **Romeo Community Schools**  
County: **MACOMB**

**BASED ON 2022 FALL FTE**  
**DISTRICT WIDE (ALL PUPILS)**

### Grade Pattern Compilation

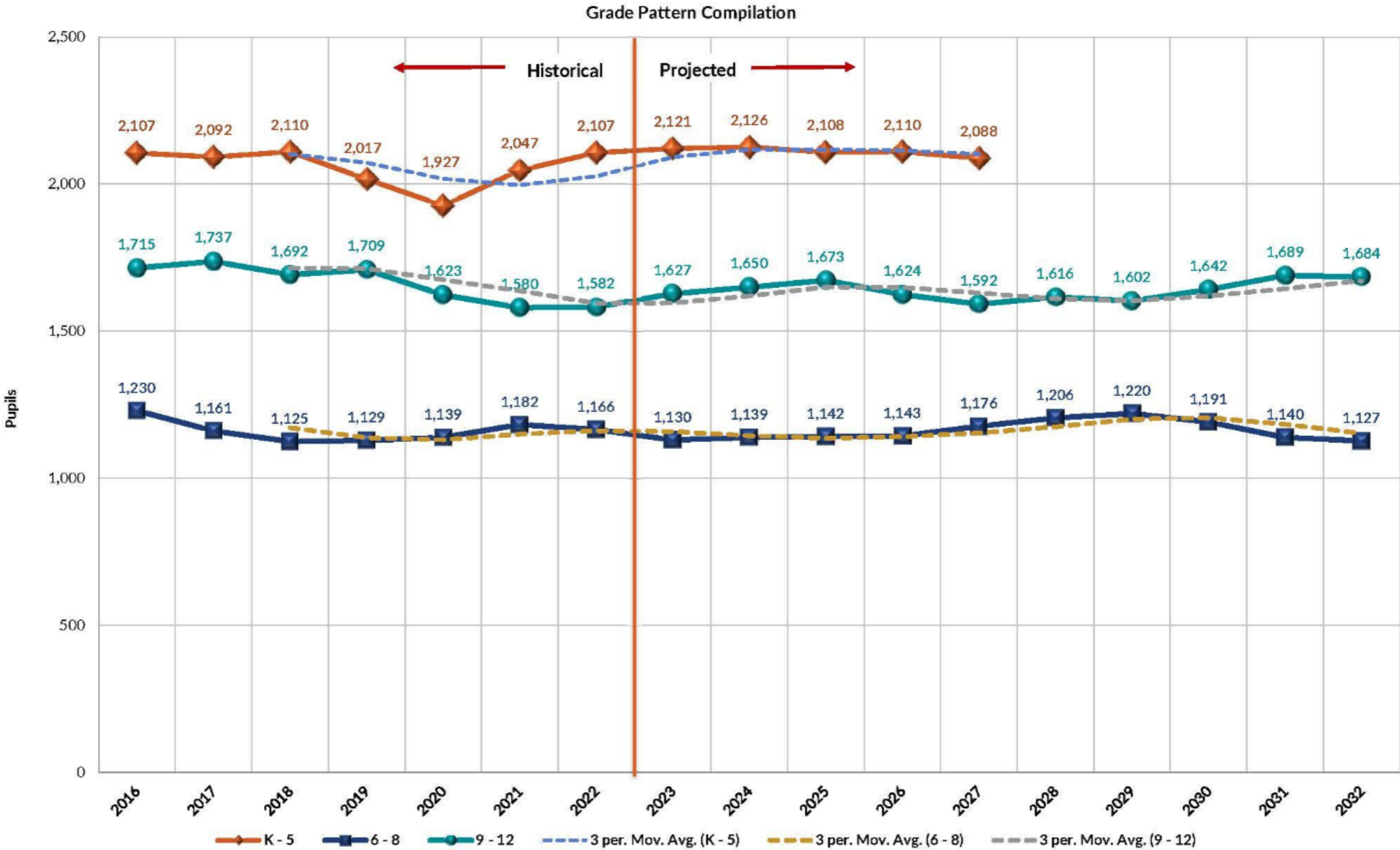
Grade Pattern	Historical Data							Projection Data									
	2016	2017	2018	2019	2020	2021	2022	2023	2024	2025	2026	2027	2028	2029	2030	2031	2032
K - 1	679	662	679	636	596	673	718	699	663	649	643	657	N.A.	N.A.	N.A.	N.A.	N.A.
K - 2	1,029	993	1,003	982	920	1,011	1,049	1,062	1,036	992	980	985	N.A.	N.A.	N.A.	N.A.	N.A.
K - 3	1,402	1,357	1,343	1,313	1,259	1,343	1,404	1,401	1,409	1,374	1,331	1,331	N.A.	N.A.	N.A.	N.A.	N.A.
K - 4	1,748	1,738	1,713	1,651	1,591	1,693	1,754	1,764	1,755	1,754	1,722	1,689	N.A.	N.A.	N.A.	N.A.	N.A.
K - 5	2,107	2,092	2,110	2,017	1,927	2,047	2,107	2,121	2,126	2,108	2,110	2,088	N.A.	N.A.	N.A.	N.A.	N.A.
K - 6	2,494	2,447	2,472	2,417	2,297	2,410	2,485	2,486	2,494	2,490	2,475	2,489	N.A.	N.A.	N.A.	N.A.	N.A.
1 - 2	697	661	673	678	645	656	694	736	715	679	665	659	674	N.A.	N.A.	N.A.	N.A.
1 - 3	1,070	1,025	1,013	1,008	984	988	1,049	1,075	1,087	1,061	1,015	1,004	1,009	N.A.	N.A.	N.A.	N.A.
1 - 4	1,416	1,407	1,382	1,346	1,316	1,338	1,398	1,438	1,434	1,442	1,406	1,363	1,363	N.A.	N.A.	N.A.	N.A.
1 - 5	1,775	1,760	1,779	1,712	1,652	1,692	1,752	1,795	1,804	1,796	1,795	1,762	1,729	N.A.	N.A.	N.A.	N.A.
1 - 6	2,162	2,115	2,142	2,112	2,022	2,055	2,130	2,159	2,173	2,178	2,160	2,162	2,140	N.A.	N.A.	N.A.	N.A.
2 - 3	723	695	665	676	663	670	686	703	745	725	688	673	667	682	N.A.	N.A.	N.A.
2 - 4	1,070	1,077	1,034	1,015	994	1,020	1,036	1,065	1,092	1,105	1,079	1,032	1,020	1,025	N.A.	N.A.	N.A.
2 - 5	1,428	1,430	1,431	1,381	1,331	1,374	1,389	1,422	1,462	1,459	1,467	1,431	1,386	1,386	N.A.	N.A.	N.A.
2 - 6	1,815	1,785	1,793	1,781	1,700	1,737	1,767	1,787	1,831	1,841	1,833	1,832	1,798	1,764	N.A.	N.A.	N.A.
3 - 4	719	745	709	669	671	682	704	702	719	763	741	704	689	682	698	N.A.	N.A.
3 - 5	1,077	1,099	1,107	1,035	1,007	1,036	1,058	1,059	1,089	1,117	1,130	1,103	1,055	1,043	1,048	N.A.	N.A.
3 - 6	1,464	1,454	1,469	1,435	1,377	1,399	1,436	1,423	1,458	1,499	1,495	1,504	1,467	1,421	1,421	N.A.	N.A.
4 - 5	705	735	767	704	668	704	703	720	717	735	779	757	719	704	697	713	N.A.
4 - 6	1,092	1,090	1,129	1,104	1,038	1,066	1,081	1,084	1,085	1,117	1,144	1,158	1,131	1,082	1,069	1,075	N.A.
5 - 6	745	708	759	766	706	716	731	722	739	736	754	800	778	738	723	716	732
5 - 7	1,154	1,097	1,125	1,132	1,112	1,108	1,100	1,108	1,112	1,113	1,145	1,174	1,188	1,160	1,109	1,097	1,102
5 - 8	1,588	1,515	1,522	1,495	1,475	1,536	1,519	1,487	1,509	1,496	1,532	1,575	1,572	1,581	1,542	1,494	1,493
6 - 7	795	744	728	766	776	755	747	751	742	759	756	775	822	799	759	742	735
6 - 8	1,230	1,161	1,125	1,129	1,139	1,182	1,166	1,130	1,139	1,142	1,143	1,176	1,206	1,220	1,191	1,140	1,127
7 - 8	843	806	763	729	769	819	788	766	770	760	778	775	794	843	819	778	761
7 - 9	1,285	1,256	1,188	1,147	1,160	1,207	1,243	1,207	1,169	1,179	1,182	1,183	1,217	1,247	1,263	1,234	1,180
7 - 10	1,703	1,695	1,629	1,567	1,577	1,605	1,635	1,662	1,611	1,578	1,601	1,587	1,626	1,670	1,668	1,678	1,636
7 - 11	2,121	2,108	2,053	2,005	1,981	2,011	1,995	2,041	2,050	2,004	1,986	1,991	2,015	2,064	2,076	2,068	2,064
7 - 12	2,557	2,544	2,455	2,438	2,392	2,399	2,370	2,393	2,420	2,433	2,403	2,368	2,410	2,445	2,461	2,468	2,446
8 - 9	877	867	822	782	754	815	874	821	796	802	791	809	807	826	877	853	810
8 - 10	1,295	1,306	1,264	1,202	1,171	1,213	1,266	1,275	1,238	1,201	1,210	1,213	1,215	1,249	1,281	1,297	1,265
8 - 11	1,713	1,719	1,687	1,639	1,575	1,620	1,626	1,654	1,677	1,627	1,594	1,617	1,605	1,643	1,689	1,687	1,694
8 - 12	2,149	2,155	2,089	2,072	1,986	2,007	2,001	2,006	2,047	2,056	2,012	1,994	2,000	2,024	2,074	2,087	2,076
9 - 10	861	889	867	839	808	786	847	897	841	818	822	812	831	828	849	900	874
9 - 11	1,279	1,301	1,290	1,276	1,212	1,192	1,207	1,275	1,280	1,244	1,207	1,216	1,221	1,221	1,257	1,290	1,303
9 - 12	1,715	1,737	1,692	1,709	1,623	1,580	1,582	1,627	1,650	1,673	1,624	1,592	1,616	1,602	1,642	1,689	1,684
10 - 12	1,272	1,287	1,267	1,291	1,232	1,192	1,127	1,186	1,251	1,254	1,221	1,184	1,193	1,198	1,198	1,234	1,266

# District-wide Pupil Enrollment

ENROLLMENT PROJECTION USING COHORT SURVIVAL METHOD  
& Adjusted to Community Demographic Trends

Educational Agency Name: Romeo Community Schools  
County: MACOMB

BASED ON 2022 FALL FTE  
DISTRICT WIDE (ALL PUPILS)



# Key Takeaways

## PEPS Overview – School District Area Data

	2010	2021	Difference
☒ Median Age of Householder:	53.1 y.o.	55.5 y.o.	2.4 years
☒ Total # of Housing Units:	12,668	13,103	435 units
☒ Total # of Families:	9,078	9,388	310 families
☒ Households with School Aged:	5,530	5,302	-228 households
☒ Enrolled School-Aged Children:	6,192	5,828	-364 children
☒ Enrolled in Public PK:	63.25%	66.83%	6.62% increase
☒ Enrolled in Private PK:	36.75%	33.17%	3.58% decrease
☒ Enrolled in Public K-12:	89.09%	85.21%	3.88% decrease
☒ Enrolled in Private K-12:	10.91%	14.79%	5.24% increase
☒ K% county birth enrolled:	3.67% (2016)	3.84% (2022)	2.24% increase
☒ Total District K-12 Enrollment:	5,051 (2016 K-12)	4,930 (Fall 2022 PK-12)	-121 pupils
☒ Total District Enrollment (All Pupils	5,314 (2016)	5,313 (Fall 2022)	-1 pupils



# Key Takeaways

## Other District's K-12 Fall FTE Enrollment Overview

	2018	2021*	Delta
▪ Armada Area Schools	1,714.26	1,717.05	3 Students
▪ Chippewa Valley Schools	15,481.06	14,187.66	-1,293 Students
▪ Fraser Public Schools	4,781.03	4,482.91	-298 Students
▪ L'Anse Creuse Public Schools	10,034.97	9,384.52	-650 Students
▪ Lakeview Public Schools	4,263.27	4,028.45	-235 Students
▪ Richmond Community Schools	1,390.04	1,493.64	104 Students
▪ Romeo Community Schools	5,131.04	5,129.80	-1 Students
▪ Utica Community Schools	26,035.46	25,127.64	-908 Students

\* Source - [mischooldata.org](https://mischooldata.org) - 2021 Academic year most recent data available  
2018-19 and 2021-22 Full Audit Files FTE Data



# Informational Updates





# Informational Updates

- **Communications**

- *MISD Operating Budget proposal 2023-2024*

- **Committee Reports**

- *Curriculum subcommittee*

## ***Upcoming Committee Meetings:***

*May 8th - Finance Committee Mtg. - "Meeting of the Whole"*

*May 15th - Policy Committee Mtg.*

*May 18th - Facilities Committee Mtg.*

*May 30th - Curriculum Committee Mtg.*

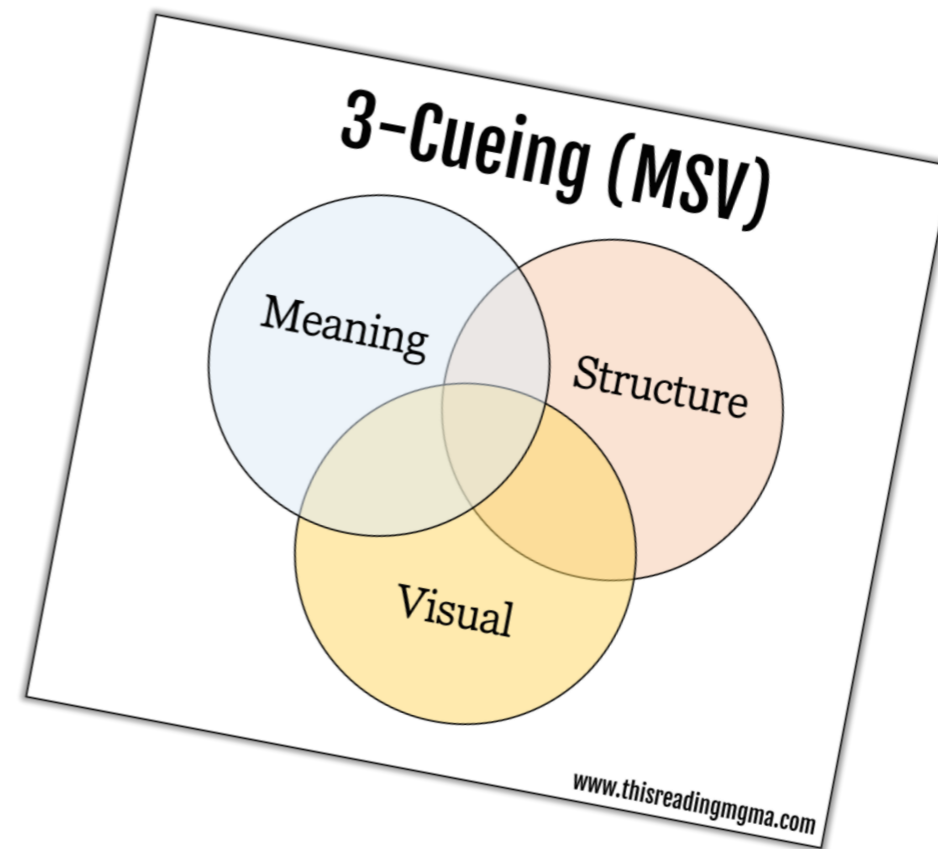
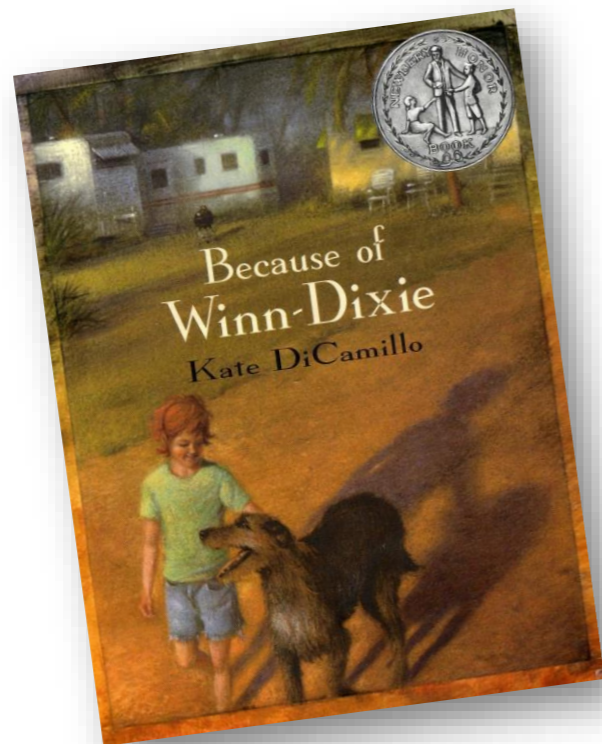


# **Academic Services**

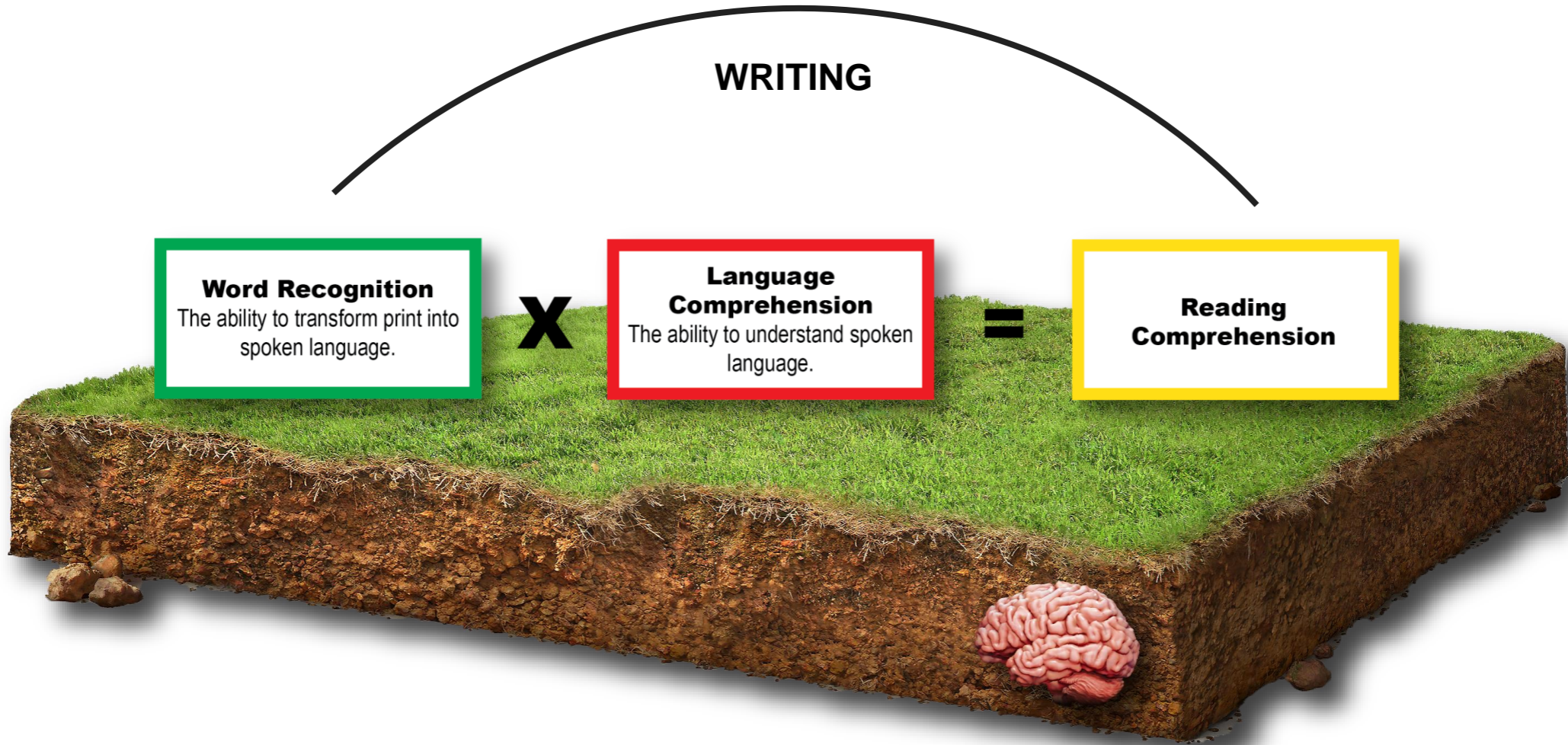
***K-5 Language Arts***

***Curriculum Adoption***

# Balanced Literacy



# Structured Literacy







# Superintendent's Report

## Academic Services Update-

- *Staffing and Hiring update*

### *New teaching positions 2023-2024*

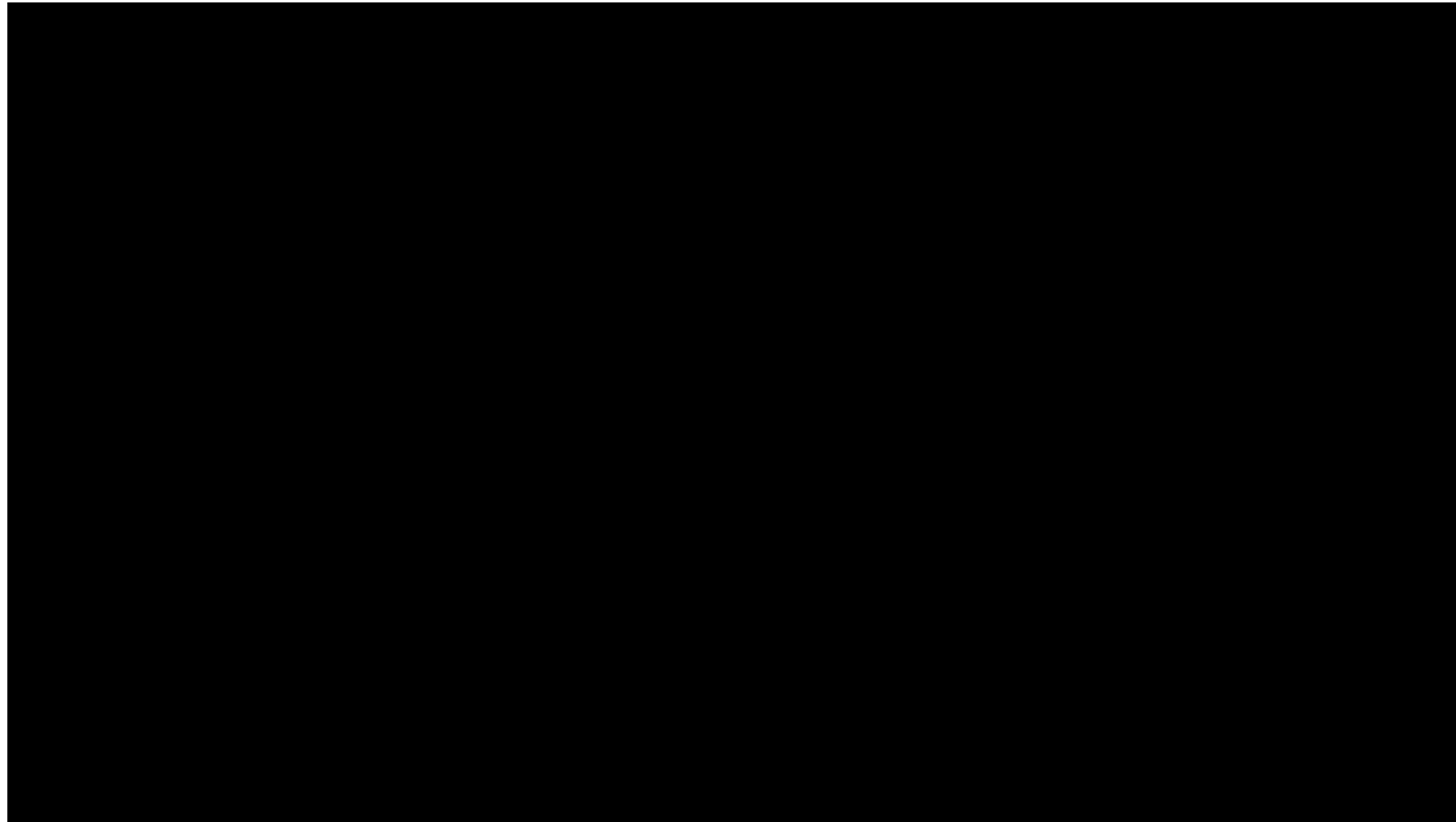
- *2 - Elementary level positions*
  - *4th grade - Hevel*
  - *IRR - Hevel*
- *3 - High School level positions*
  - *1.0 Art position*
  - *1.0 Social Studies/Psychology*
  - *1.0 Part time CTE positions*
    - *Video production, Culinary Arts, Architecture*



# Superintendent's Report

## Academic Services Update Cont'd.-

- *Lu Interactive Systems*





# Superintendent's Report

## **Construction Update-**

- *Transportation Facility*
- *Group 1 projects are underway*

## **Safety Update-**

- *2-way Radio Tower Agreement with Bruce Township passed on April 19th*

## **2023-2024 District Leadership Priorities - Group 2**

- RMS Additional Administrative position
- Middle School Academies Planning
- Support for K-5 Language Arts and K-12 Social Studies Curriculum adoptions
- RVA Student Support Liaison (*counseling support*)





# Superintendent's Report

## ***Elementary Redistricting Proposal 2023-24 -***

- *Elementary enrollment review*
  - *Internal review past 4 years*
  - *Building support needed-*
    - *Amanda Moore- rising enrollment*
    - *Washington Elementary - declining enrollment*
  - *Plante Moran Cresa - Forecasting Study*
  - *Residential developments review*



# *Elementary Level Proposal*

CUMULATIVE FTE's AMANDA MOORE, HEVEL AND WASHINGTON 2011-2022 (FALL COUNT)			
SCHOOL YEAR	AMANDA MOORE	HEVEL	WASHINGTON
11/12	415	469	435
12/13	394	461	405
13/14	375	477	408
14/15	361	472	410
15/16	347	444	427
16/17	359	437	424
17/18	423	411	410
18/19	422	400	422
19/20	437	397	390
20/21	419	361	366
21/22	431	398	386
22/23	<b>475</b>	<b>423</b>	<b>351</b>
Summary	up <b>53</b> and <b>38</b> from peak	up 23 and down <b>54</b> from peak	down <b>77</b> and <b>84</b> from peak



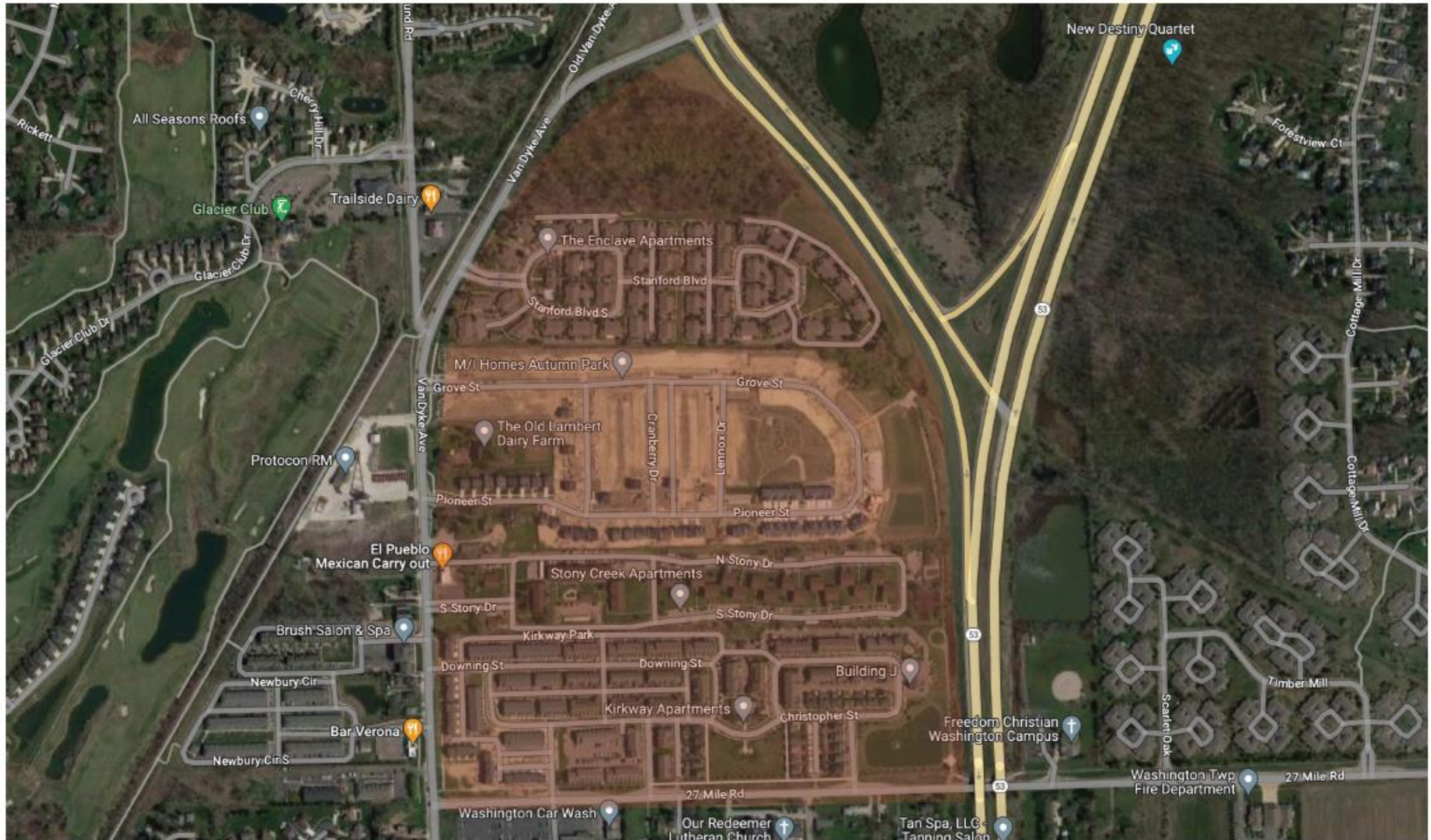
# Superintendent's Report

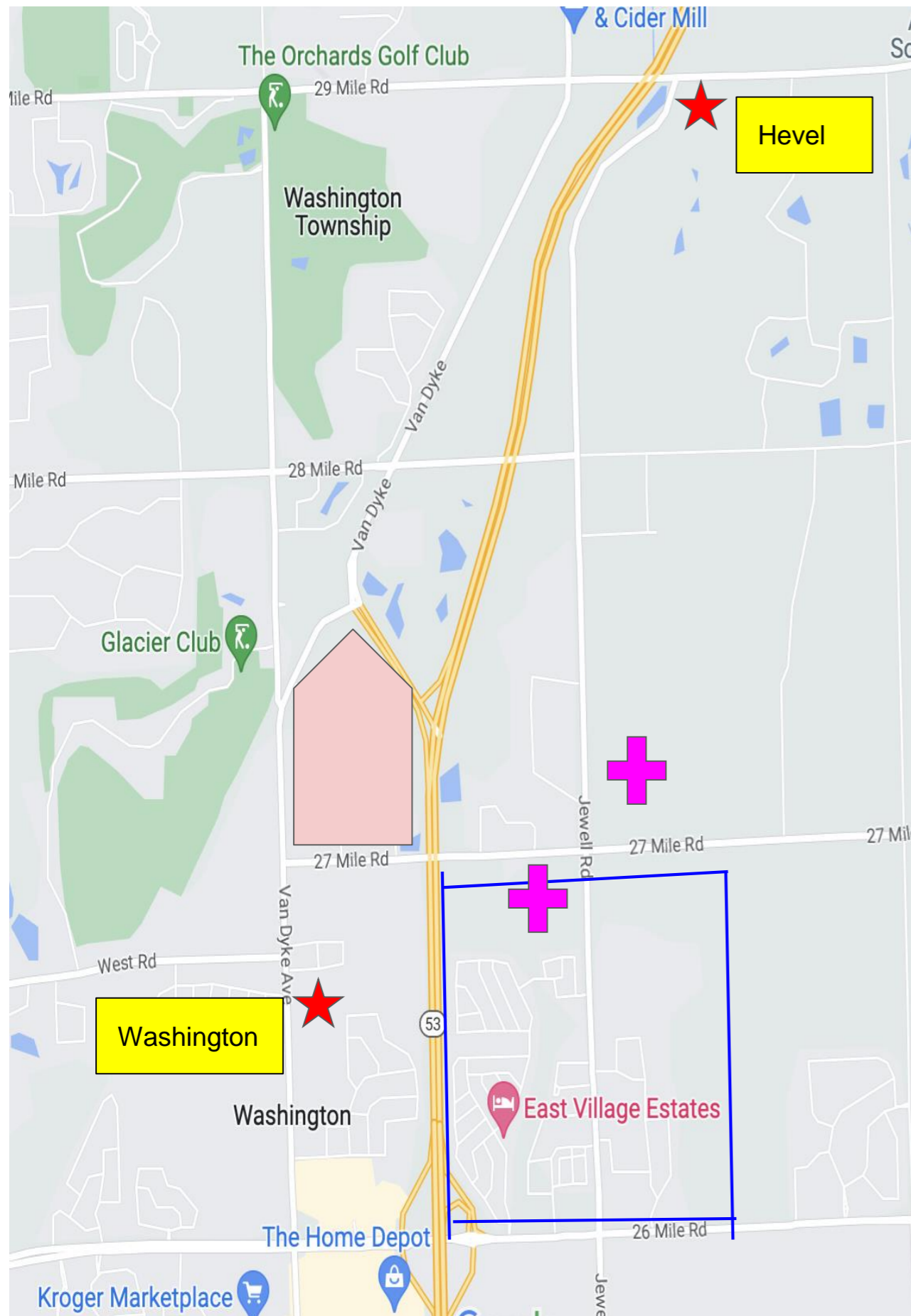
## ***Elementary Redistricting Proposal 2023-24 -***

- *Redistricting Proposal*
  - *Balancing enrollment 400-450*
  - *Geographic area redistricting proposal*
  - *Residential developments review*


# Elementary Redistricting Proposal

## Neighborhoods Currently Attending Hevel That Will Attend Washington in 2023-2024





# Elementary Redistricting Proposal

- Work to balance and sustain buildings at 400-450 students
- Investigated all students south of 27 mile but Hevel's enrollment is currently dependent on two developments east of M-53. (Liberty Woods and East Village - northside)
- East Village mobile home park is split between WSH and HVL
- New Subdivisions will impact at some point 
- Shift the students reside in the targeted area residential developments and addresses to WSH (*currently attend HVL*)
  - Stoney Creek Apartments
  - Kirkway Townhomes
  - Autumn Woods Subdivision
  - The Enclave
- All residences impacted are less than a mile away from Washington Elementary.
- Students from Apple Valley Apartments who used to attend Hevel prior to IH redistricting would redistrict back to Hevel

## Other Conditions-

- Rising 5th graders who have attended for 2 or more years can complete elementary at their current school (**no transportation**)
- No intradistrict SOC because of redistricting, can apply if other conditions exist (ex. childcare)



# Superintendent's Report

## ***Elementary Redistricting Proposal 2023-24 -***

- ***Impact-***
  - *AME to Hevel = 22 students - 17 families/homes*
  - *Hevel to Washington = 57 students - 48 families/homes*
  - *This includes current Y5 and K enrollment for next school year*
  
- ***Communication-*** *(has begun with impacted families)*
  - *District letter*
  - *Current Principal phone calls*
  - *District level follow up as requested*
  
- ***Transition-***
  - *Communications and activities are planned*